

COMMONWEALTH OF KENTUCKY
CITY OF PROSPECT
ARCHITECTURAL REVIEW COMMITTEE MEETING
October 13, 2025, 4:00 pm

1. Call to Order
2. Approval of minutes of the August 13, 2025 meeting
3. Comments from Citizens
4. Mayor's Report
5. Old Business
6. New Business
 - Review of the proposed signage for Evergreen Liquors, 8907H U.S. Hwy 42.
7. Adjournment

Members of the public may attend in person and see and hear all participating members at
Prospect City Hall, 9200 US Hwy 42, Prospect, Kentucky.

COMMONWEALTH OF KENTUCKY
CITY OF PROSPECT
ARCHITECTURAL REVIEW COMMITTEE MEETING

August 13,2025

Call to order 3:50 P.M. Members present: Don Gibson, Robert Jacob, Lisa Stanley, Herb Shulhafer, Sara Hines.

Guest Speaker: Jim Brainard

1. Approval of June 25, 2025 minutes.
2. Mr. Brainard presented his experience and expertise in urban planning and development while serving as mayor of Carmel, Indiana for 28 years. He gave a historical summary on the vision and methodology they used to redevelop the business and residential areas of the city which has become a model for cities around the country and world for to use as a template for future planning with the emphasis on livability, aesthetics, and multiuse. He is being considered to be a consultant to the city of Prospect for guidance on our long-term development plan.
3. A motion was made and approved to recommend to the City Council to appropriate funding to finance a contract with him and hire the necessary experts to facilitate and implement the long-term planning initiative.
4. Meeting adjourned 4:40 P.M.

Robert Jacob

Proposed Monument Sign Placement



RSI

RUEFF SIGNS

www.rueffsigns.com

1530 East Washington St.
Louisville, Kentucky 40206

502-582-1714 - Phone
502-584-6427 - Fax

CUSTOMER

Evergreen Liquors

LOCATION

Prospect, KY

SALESMAN

Bob Rueff

DATE

9/24/2025 7:03:14 AM

SCALE

NTS

FILE NAME

Evergreen Liquors / Prospect Signage Ver 4



ALL MECHANICAL SIGNS ARE 120 VOLTS UNLESS OTHERWISE INDICATED

This sign is intended to be installed in accordance with the requirements of Article 600 of the National Electrical Code and/or other applicable local codes. This includes proper grounding and bonding of the sign.

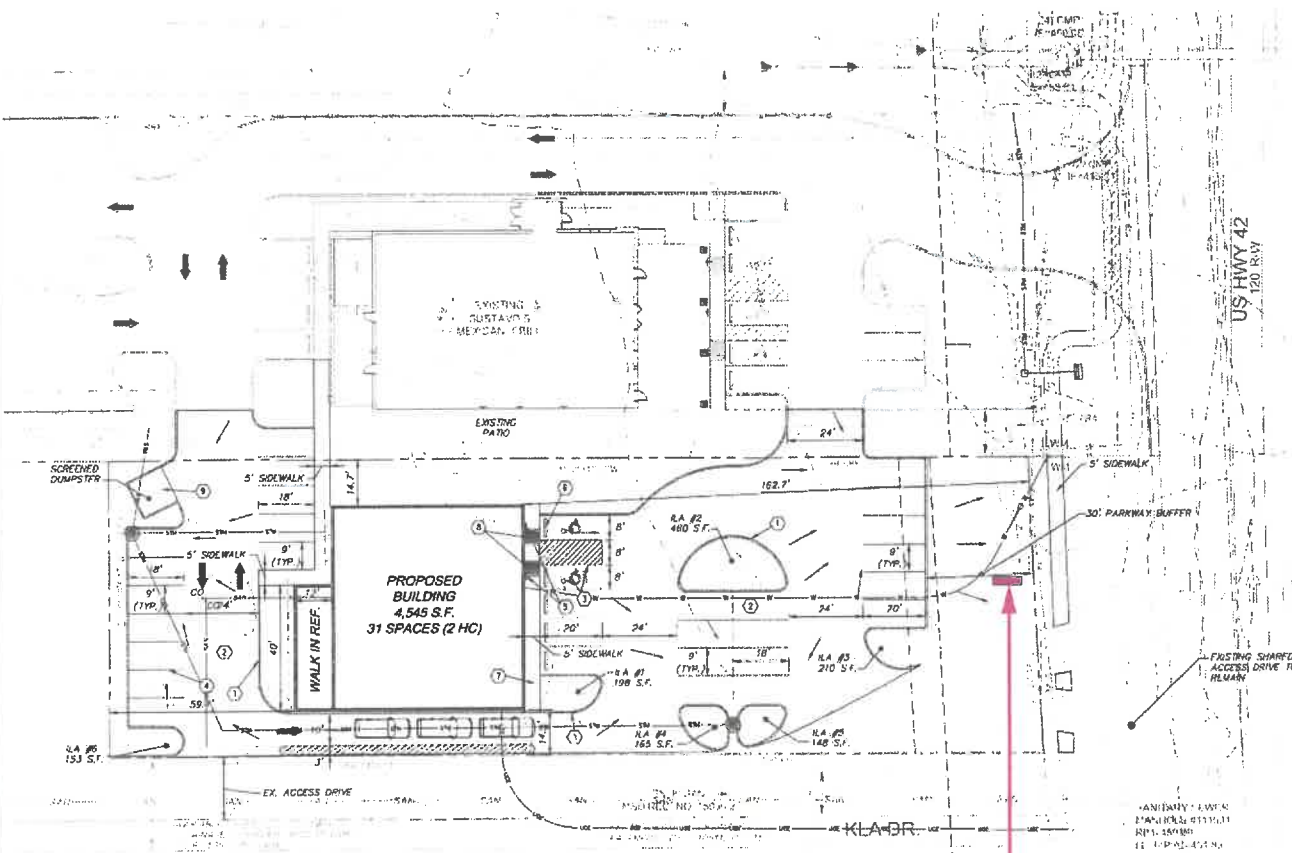
This is a sketch, NOT A BLUEPRINT. Any photo overlays or images are merely an attempt to show the sign(s) as close as possible to how they may appear installed.

FINAL SIZES ARE AS LISTED ON THE MECHANICAL BREAKDOWN.

The contents of this drawing and all design elements are the property of Rueff Signs, Inc. They are not to be reproduced, changed, or exhibited to anyone outside of your company in whole or in part without written permission from the owner of Rueff Signs, Inc. All such actions are prohibited by law.

© RUEFF SIGNS, 2022 ALL RIGHTS RESERVED

Proposed Monument Sign Placement



Approximate Sign Location

OWNER/DEVELOPER

PROSPECT SDSA, LLC
6717 CHIMNEY HILL ROAD
CRESTWOOD, KENTUCKY 40014-7222

LEGEND

- EX. ELECTRIC MANHOLE
 EX. SANITARY MANHOLE
 EX. EDGE OF MANHOLE
 EX. MAIL BOX
 EX. CRUSHED STONE
 EX. LIGHT POLE
 EX. GUY WIRE
 EX. GAS METER
 EX. AIR CONDITIONER UNIT
 EX. WATER METER
 EX. UTILITY POLE
 EX. CATV PEDESTAL
 EX. STORM MANHOLE
 EX. CONCRETE
 EX. TREE LINE
 EX. WIRE FENCE
 EX. BOARD FENCE
 EX. CONTOURS (1' INTERVAL)
 EX. UTILITY POLE
 EX. ELECTRIC BOX
 TO BE REMOVED
 DO NOT DISTURB
 EX. PROPERTY SEWER CONNECTION
 LANDSCAPE BUFFER AREA
 TYPICAL
 EX. TREE WITH SIZE
 EX. STORM LINE
 EX. UNDERGROUND TELEPHONE
 EX. OVERHEAD ELECTRIC
 EX. UNDERGROUND FIBER OPTIC
 EX. WATER
 EX. PROPERTY LINE (REMOVED)
 EX. FLOW ARROWS
 CONCEPTUAL DRAINAGE FLOW ARROWS
 CONCEPITUAL STORM SEWER
 PROPOSED SANITARY SEWER
 PROPOSED MAN-HOLE
 TRAFFIC DIRECTIONAL ARROW
 PROPERTY SURVEY CONNECTION
 TO BE REMOVED
 PARKING LOT



125i
RUEFF SIGNS
www.rueffsigns.com

**1530 East Washington St.
Louisville, Kentucky 40206
502-582-1714 - Phone
502-584-6427 - Fax**

CUSTOMER

Evergreen Liquors

LOCATION

Prospect, KY

SALESMAN

Bob Rueff

DATE _____

9/24/2025

7:03:14 AM

SCALE

$$1/2'' = 1'$$

FILE NAME

Evergreen Liquors / Prospect Signage Ver 4



ALL PARTS ARE 120 VOLTS UNLESS OTHERWISE NOTED

This sign is intended to be installed in accordance with the requirements of Article 600 of the National Electrical Code and/or other applicable local codes. This includes proper grounding and bonding of the sign.

This is a sketch, NOT A BLUEPRINT. Any photo overlays or images are merely an attempt to show the sign(s) as close as possible to how they may appear installed.

FINAL SIZES ARE AS LISTED ON THE MECHANICAL BREAKDOWN.

The contents of this drawing and all design elements are the property of Rueff Signs, Inc. They are not to be reproduced, changed, or exhibited to anyone outside of your company in whole or in part without written permission from the owner of Rueff Signs, Inc. All such actions are prohibited by law.

© RUEFF SIGNS, 2022 ALL RIGHTS RESERVED

D/F Internally Illuminated
Monument Sign
-MC Vinyl Graphics
-Faux Brick Pole Cover
-4" Tall 1/4" Aluminum Address Numbers



8907H 5 1/2"
16"

Optional:
Reflective White Vinyl Address Numbers
on Black Aluminum Plate

Black
White

RSI
RUEFF SIGNS
www.rueffsigns.com

1530 East Washington St.
Louisville, Kentucky 40206
502-582-1714 - Phone
502-584-6427 - Fax

CUSTOMER

Evergreen Liquors

LOCATION

Prospect, KY

SALESMAN

Bob Rueff

DATE

9/24/2025 7:03:14 AM

SCALE

1/2" = 1'

FILE NAME

Evergreen Liquors / Prospect Signage Ver 4

UL Underwriters
Laboratories Inc.
LISTED
ELECTRIC SIGN
COMPLIES TO UL 48

ALL ELECTRICAL SIGNS ARE 120 VOLTS UNLESS OTHERWISE INDICATED

This sign is intended to be installed in accordance with the requirements of Article 600 of the National Electrical Code and/or other applicable local codes. This includes proper grounding and bonding of the sign.

This is a sketch, NOT A BLUEPRINT. Any photo overlays or images are merely an attempt to show the sign(s) as close as possible to how they may appear installed.

FINAL SIZES ARE AS LISTED ON THE MECHANICAL BREAKDOWN.

The contents of this drawing and all design elements are the property of Rueff Signs, Inc. They are not to be reproduced, changed, or exhibited to anyone outside of your company in whole or in part without written permission from the owner of Rueff Signs, Inc. All such actions are prohibited by law.

© RUEFF SIGNS, 2022 ALL RIGHTS RESERVED



EVERGREEN LIQUORS 
View at Night

10 1/2" **EVERGREEN LIQUORS**  12"
Perforated Black Vinyl on Faces



Wall Mounted Channel Letters END VIEW LED Internal Illumination Not To Scale



Channel Letters - Flush Mount
Letter Colors: Letter Faces, Black Perf
Returns, Black
Jewellite Trim, Black
Cloud Sign Colors: Face, Printed
Returns, Black
Jewellite Trim, Black
For Construction Details See End View Insert.

RSI

RUEFF SIGNS

www.rueffsigns.com

1530 East Washington St.
Louisville, Kentucky 40206

502-582-1714 - Phone
502-584-6427 - Fax

CUSTOMER

Evergreen Liquors

LOCATION

Prospect, KY

SALESMAN

Bob Rueff

DATE

9/24/2025 7:03:14 AM

SCALE

1/2" = 1'

FILE NAME

Evergreen Liquors / Prospect Signage Ver 4



ALL ELECTRICAL CIRCUITS ARE 120 VOLTS UNLESS OTHERWISE INDICATED

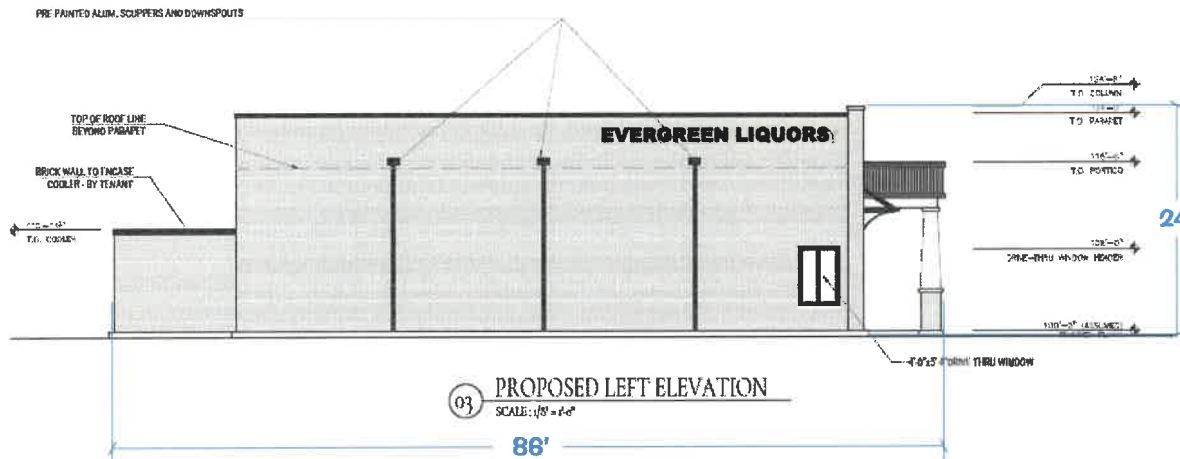
This sign is intended to be installed in accordance with the requirements of Article 600 of the National Electrical Code and/or other applicable local codes. This includes proper grounding and bonding of the sign.

This is a sketch, NOT A BLUEPRINT. Any photo overlays or images are merely an attempt to show the sign(s) as close as possible to how they may appear installed.

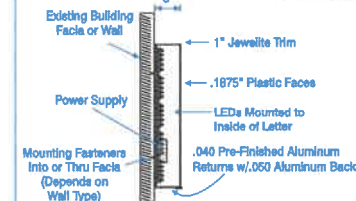
FINAL SIZES ARE AS LISTED ON THE MECHANICAL BREAKDOWN.

The contents of this drawing and all design elements are the property of Rueff Signs, Inc. They are not to be reproduced, changed, or exhibited to anyone outside of your company in whole or in part without written permission from the owner of Rueff Signs, Inc. All such actions are prohibited by law.

© RUEFF SIGNS, 2022. ALL RIGHTS RESERVED



Wall Mounted Channel Letters LED Internal Illumination



Channel Letters - Flush Mount
Letter Colors: Letter Faces, Black Perf Returns, Black Jewelite Trim, Black
Cloud Sign Colors: Face, Printed Returns, Black Jewelite Trim, Black
For Construction Details See End View Insert.

20" 30'-0" 20"

EVERGREEN LIQUORS

- Move Existing Set of Channel Letters from Previous Prospect Location to this location
- Replace Faces on Letters with New Black Perforated Faces with Black Trimcap
- Paint Returns Black
- Remove Raceway and Flush Mount



RSi
RUEFF SIGNS
www.rueffsigns.com

1530 East Washington St.
Louisville, Kentucky 40206
502-582-1714 - Phone
502-584-6427 - Fax

CUSTOMER

Evergreen Liquors

LOCATION

Prospect, KY

SALESMAN

Bob Rueff

DATE

9/24/2025

7:03:14 AM

SCALE

1/4" = 1'

FILE NAME

Evergreen Liquors / Prospect Signage Ver 4



ALL ELECTRICAL SIGNS ARE 120 VOLTS UNLESS OTHERWISE INDICATED

This sign is intended to be installed in accordance with the requirements of Article 600 of the National Electrical Code and/or other applicable local codes. This includes proper grounding and bonding of the sign.

This is a sketch, NOT A BLUEPRINT. Any photo overlays or images are merely an attempt to show the sign(s) as close as possible to how they may appear installed.

FINAL SIZES ARE AS LISTED ON THE MECHANICAL BREAKDOWN.

The contents of this drawing and all design elements are the property of Rueff Signs, Inc. They are not to be reproduced, changed, or exhibited to anyone outside of your company in whole or in part without written permission from the owner of Rueff Signs, Inc. All such actions are prohibited by law.

© RUEFF SIGNS, 2022 ALL RIGHTS RESERVED